

# the ME Pipeline

Department of Mechanical Engineering Newsletter

## FROM THE CHAIR - WELCOME BACK

I hope you enjoyed your summer and are ready for a productive academic year. Let's make this an exciting year for everyone in Mechanical Engineering.

Many of you are aware of FAU's campus-wide budget cuts and asked yourself "Am I affected?" In short, the Fall and Spring semester will not be impacted. The College of Engineering and Computer Science absorbed most of these cuts from non-academic resources. The Summer 2008 course offerings will be reduced by half. EGN 4410 ED I and EGN 4411 ED II will be scheduled as committed to ME students; a combination of core, technical and graduate courses will be offered. I hope the reduced offering has a minimal effect on your academic progress. If you have any special needs or course requirements, please e-mail KC Coyle at [kcoyle1@fau.edu](mailto:kcoyle1@fau.edu). She and I will be developing the Summer schedule in early October.

Again, welcome back and on behalf of myself and the ME faculty and staff, we wish you success.



It is with mixed emotions we wish a Happy Retirement to Dr. Sharon Schlossberg, your Assistant Dean for Student Affairs, College of Engineering and Computer Science and the Co-Founder of Engineering Student Services. This edition of the ME Pipeline is dedicated to our friend, peer, colleague, and "fairy godmother" to students past and present. We bring you. . .



## UP CLOSE & PERSONAL with "Dr. S."

Where did you attend college? My bachelor's degree at Queens College, and I have two Masters one from C. W. Post and the other from FAU in Counselor Education. My Ed.D. is also from FAU. What course did you struggle with and how did you get through it? Physics! Perseverance, independent study and study groups. What type of music do you like and who is

favorite musician? Popular music and show tunes. I like musicians and bands associated with the Big Band sound. What are the best and worst jobs you have had? Without question, best was the Assistant Dean for Student Affairs. My worst job, all the jobs I had in my professional life were a good experience but in high school, I worked as card store clerk - that was boring! What is your favorite non-academic book? I enjoy good novels and love many good books. Jane Austen is a great author. I love *Gone with the Wind* and *The Godfather*. I recently read Sara Gruen's *Water for Elephants* and thought it was a great read. What makes you laugh? Lots of things make me laugh but the antics of children really tickle me. What are some favorite movies? *Gone With the Wind*, *The Godfather* parts 1 and 2, and *The Sound of Music*. Favorite actor? Diane Keaton, Robert DeNiro, Al Pacino. What profession would you most like to attempt? An attorney or involvement in government service. What profession do you not want to attempt? Retail sales. If you won the lottery, what three things would you do with the money? Secure my children and grandchildren's future, travel, and contribute or start a foundation to help others. Now that you are retired, what are your plans? Spend more time with my children and grandchildren, travel, make some meaningful contribution, might even write something.



Who ever thought we'd catch Dr. Schlossberg "speechless" - but here she is at her surprise party in the lobby with family, colleagues, friends, faculty, staff, students and community leaders!

## THE FE EXAMINATION

Interested in taking the Fundamentals of Engineering examination for technical elective credit or professional credentials? Application receipt deadline is October 12, 2007 for the April 12, 2008 exam. Learn more about the exam, application process from the Florida Board of Professional Engineers web site [www.fbpe.org](http://www.fbpe.org) and the exam itself [www.ncees.org/exams/fundamentals](http://www.ncees.org/exams/fundamentals). The student chapter of ASME will sponsor a multi-week exam prep course for the spring exam January 2008. Watch this space and announcements around the ENG building for more details.

## RECOGNITION, SHOUT OUTS and KUDOs

Interested in recognizing a peer, faculty, staff or all round good friend! Here's the place, just send an e-mail to [kcoyle1@fau.edu](mailto:kcoyle1@fau.edu). Also we want pictures of ME students in action - so send us what you have!

**Maria Reimann** attended the Society, Cybernetics and Informatics conference in Orlando in July. She delivered a paper "Design of an In-Home Defrosting Device by Numerical Simulation," at the Technological Innovations in Mathematics Education session. **CONGRATULATIONS Maria!**

Do you know what a HAM radio is? Why it is important for communications in catastrophe situations; especially when the cell phone towers are down? Just ask **Justin Hornby!** A Palm Beach Post article highlighted FAU's HAM radio club and Justin! *The Pipeline will feature the club in a future edition.*

## TRUDY'S CORNER

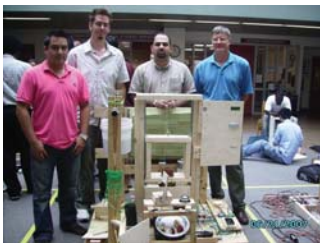


**WELCOME BACK** – it's great to see familiar faces again AND a special welcome to our newcomers. Our door is always open for you – stop by say hi, checkout the ME bulletin for the latest news in the department, or if you want to vent, I'm listening.

As a member of the BIG E @ FAU (National Engineering Week) committee, we are planning events for February 17-23, 2008. We seek donations for door prizes, awards, raffles – any contacts you have for restaurants, entertainment, food, etc. is appreciated. Last year's 3-day event began with a brunch with faculty from all disciplines as servers; followed up with a carnival; and ending with a 'brain bowl'. The ME was runner-up last year --- this year they are going for broke! More about the 2008 Big E event in future editions.

## SUMMER 2007 HAPPENINGS

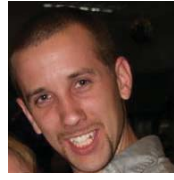
The ED I design project this summer was based on the Rube Goldberg Machine Contest, a national competition held annually at Purdue University. Each team had to design a machine that would quarter an apple and serve



on a plate in specific number of steps (each team member had to design four steps) Want to learn more: [www.rubegoldberg.com](http://www.rubegoldberg.com) or go to [www.youtube.com](http://www.youtube.com) and search Rube Goldberg.

## STUDENT CLUB FEATURE

American Society of Mechanical Engineering



An interview with Nick Craven, President of the student chapter of ASME. **Why join ASME?** There are many reasons, but networking with employers and professional engineers, off-campus activities, volunteer projects, host high school competitions, sponsor FE Exam review, E-Week, food, fun, camaraderie are just a few. What kind of activities do ASME members get to do? We got to tour the Kennedy Space Center this summer. We are building the YMCA Halloween Haunted House in a couple of weeks. We help with the high school competitions last year was "robot wars" and this year it's the Rube Goldberg machine contest and an FBI representative is speaking at our next meeting on engineering jobs with the bureau (who knew that was available?) Can anyone join? Yes, we encourage students from all majors to join and be active members. How much does it cost? Nothing to join the FAU chapter. We encourage students to join the National ASME. You get access to the members only web site and scholarships; subscription to ME magazine; post your resume for jobs as you near graduation; a significant discount on the FE Exam Review (\$35 member/student vs. \$300 non-member/non-student), plus so much more there's not enough space. How often do you meet? We meet formally twice a month, but as events get closer, sometimes we meet more often. How do I join? Log in to your [myfau.fau.edu](http://myfau.fau.edu) account, in the upper right corner click on "groups", click on "group index", click on "academic", click on ASME, click on "join group." It's that easy! Any parting words? Yes, check us out, we have so many activities, I know there's something for everyone.

## JOIN PROFESSIONAL ORGANIZATIONS

Many organizations offer low-cost student membership and scholarships. Join one or more today.

ASHRAE - American Society of Heating, Refrigerating & Air Conditioning Engineers

[www.ashrae.org](http://www.ashrae.org) (\$16 annually)

ASME - American Society of Mechanical Engineering

[www.asme.org](http://www.asme.org) (\$25 annually)

NSBE – National Society of Black Engineers

[www.nsbe.org](http://www.nsbe.org) (\$10 annually)

SAE - Society of Automotive Engineers

[www.sae.org](http://www.sae.org) (\$10 annually)

SHPE – Society of Hispanic Professional Engineers

[www.shpe.org](http://www.shpe.org) (\$5 annually)

SWE – Society of Women Engineers

[www.swe.org](http://www.swe.org) (\$20 annually)

### JEFF'S MACHINE SHOP BITS & TIPS

Jeff wants to remind students, all work must have a blueprint, no exceptions! ATTENTION ED I and II students start NOW – remember first in - first out. Jeff is available to review design, consult on materials – call for appointment 297-3427 or e-mail [jwebb@fau.edu](mailto:jwebb@fau.edu).

### NEED HELP WITH WRITING PROJECT?

University Center for Excellence in Writing is a FREE service for undergraduate and graduate students to improve your writing. Attend a workshop – APA style or Avoid Plagiarism or Beyond Google! Located in Social Science Building Room 107; or make an appointment online [www.fau.edu/UCEW](http://www.fau.edu/UCEW)

### TUTORING REMINDER – It's FREE

Engineering Student Services Room # 170/Bldg 36

#### Calculus & Physics

Tuesday/Thursday 9:00 AM – 1:00 PM

#### Programming

Monday/Wednesday 1:00 PM – 5:00 PM

Friday 10:00 AM – 4:00 PM

#### Engineering

Monday/Wednesday 1:00 PM – 3:00 PM

Tuesday 9:00 AM – Noon  
2:00 PM – 4:00 PM

Thursday 9:00 AM – Noon  
2:00 PM – 5:00 PM

#### @ Heritage Park Towers

Monday/Wednesday 10:00 AM – 1:00 PM

### ACADEMIC CALENDAR REMINDERS

- 09/12 Last day to submit application for degree
- 09/26 College of Engineering Career Fair
- 10/19 Last day to withdraw without an 'F'
- 11/08 Spring Registration Begins
- 11/12 Veteran's Day, no classes
- 11/13: Last day to submit Doctoral Dissertation
- 11/19: Last day to submit Master's thesis
- 11/22 – 11/25: Closed for Thanksgiving
- 12/06 Reading Day, no classes, no exams.
- 12/07 – 12/13: Final Exams
- 12/14 Semester Ends!
- 12/14 Commencement
- 01/05: Spring Semester begins, start all over again

### LOST and FOUND

Seeking owners of lost objects! Sunglasses, keys, earrings, flash drives, and items left in classrooms, lobby, etc. in the engineering building. Stop by the ME office (room 120), ask for Trudy.

### FINAL EXAM SCHEDULE

Check out your final exam schedule at this link, [www.fau.edu/registrar/schedule/final07F.php](http://www.fau.edu/registrar/schedule/final07F.php)

### ATTENDANCE POLICY

The ME department instituted a class attendance policy in the Spring 2007 term. Allowable per term absences are: M/W/F classes four (4) and TH classes three (3); exceed allowable absences equals **ONE LETTER GRADE REDUCTION**. Allowed absences are approved at discretion of instructor.

### THE SUMMER PUZZLE SOLUTION

The diameter of the circular track has no bearing on the problem. When they meet, the deer has gone 1/6 of the way while the snail traveled 17/24. The snail moved 17/4 times as fast as the hare. The deer has 5/6 of the distance yet to go as compared to 1/6 for the snail, so the hare must go five times faster than the snail, or 85/4 times faster than he went before.

### THE SEPTEMBER PUZZLE

Transform the triangular pattern of dots on the left to the one on the right by moving only three dots. Submit your solution to the ME office – winning entries will be entered in a drawing for a free text book.



### ME FACULTY OFFICE HOURS

*or by appointment*

Professor	Day	Ofc. Hours	E-mail
Amir Abtahi	M/W/F	9:30 - 11:30	abtahi@fau.edu
William Bober	M/W/F	10:00 - 12:00	boberw@fau.edu
George Cai	TH	9:00 - 12:00	caig@fau.edu
Leif Carlsson	M/W/F	2:00 - 4:00	carlsson@fau.edu
Isaac Elishakoff	M/F W	10:00 - 12:00 1:00 - 3:00	elishako@fau.edu
Gopal Gaonkar	M W/F	2:00 - 3:50 3:00 - 3:50	gaonkar@fau.edu
Chaouki Ghenai	M/W/F	10:00 - 12:00	cghenai@fau.edu
Kader Mazouz	M/T/W	1:00 - 3:00	mazouz@fau.edu
Oren Masory	TH	10:00 - 12:00	masoryo@fau.edu
Davood Moslemian	M/W/F TH	9:00 - 10:00 11:00 - 12:30	moslemian@fau.edu
Gary Salivar	M/W TH	2:00 - 3:00 1:00 - 2:00	salivar@fau.edu
Joe Su	M/W/F	8:00 - 8:50 2:00 - 2:50	su@fau.edu
C.T. Tsai	M/W/F W/F	10:00 - 11:00 2:30 - 3:50	tsaict@fau.edu